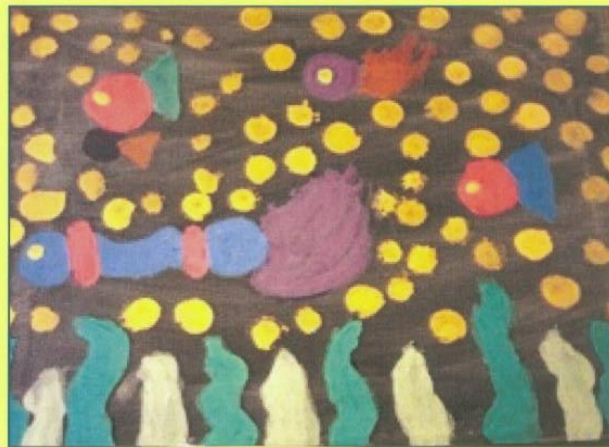


**The Los Angeles County
Commission for
Children and Families**

**ANNUAL REPORT
FISCAL YEAR
2013-2014**



Under the Sea
By Cathy, Five Acres



Gloria Molina
First District



Mark Ridley-Thomas
Second District



Zev Yaroslavy
Third District



Don Knabe
Fourth District



Michael D. Antonovich
Fifth District

Table of Contents

Board of Supervisors	2
Commissioners Serving from July 2013-June 2014	4
Commission Overview	5
Commission Activities 2013-2014	8
Letters Sent	13
Commission for Children and Families Recommendations	14
Commission Recognition	16
Commission Committees and Workgroups 2013-14	17
Commission Representation on County Bodies 2013-14	18
Conferences/Events Attended Representing the Commission	20
Summary of Issues Discussed at Commission Meetings 2013-14	21
Appendix	22

Artwork

Under the Sea by Cathy, Five Acres (Cover Page)	1
Heart by Jordan, Hillside (Back Page)	23

Commissioners Serving from July 2013 - June 2014

**Supervisor Gloria Molina
First Supervisorial District**

Steven M. Olivas, Esq.
Adelina Sorkin, LCSW/ACSW
Martha Trevino Powell

**Supervisor Mark Ridley-Thomas
Second Supervisorial District**

Sydney Kamlager
(Appointed July 30, 2013)
Candace Cooper
(Appointed August 13, 2013)
Adrienne Konigar-Macklin
(Appointed October 8, 2013)

**Supervisor Zev Yaroslavsky
Third Supervisorial District**

Carol O. Biondi
Susan F. Friedman
Helen A. Kleinberg

**Supervisor Don Knabe
Fourth Supervisorial District**

Ann Franzen
Dr. Sunny Kang
Sandra Rudnick
(Served until July 1, 2013)

**Supervisor Michael D. Antonovich
Fifth Supervisorial District**

Genevra Berger
Patricia Curry
Becky A. Shevlin
(Served until June 2, 2014)

Commission Officers

Genevra Berger, Chair
Susan F. Friedman, Vice Chair
Steven M. Olivas, Esq., Vice Chair

**Commission Staffed by
Executive Office, Commission Services**

Sylvia Drew Ivie, Executive Liaison
Martha Arana
Ivonne Umana
Vibiana Navarro

Commission Overview

Vital Role Played by the Commission for Children and Families

Los Angeles County's mandate to address the needs of families and children in the child welfare system is in many ways a very challenging and difficult responsibility. The safety of all residents in the County is of great concern and can often become a life or death matter if not addressed. Safety cannot be assured without an array of supportive services available for children, families, and communities. The complexity of cases and the number of issues that must be simultaneously addressed require the attention of multiple departments working with community partners. With the myriad of initiatives implemented in the fields of child safety and child and family well-being, a discontinuity exists, which can cause a safety issue for the child.

In 1984, the Board of Supervisors (Board) created the Commission for Children and Families (CCF) to monitor and evaluate the County's delivery of service for children and their families, to report to the Board its findings, and make recommendations to modify procedures to ensure compliance.

For over 30 years, the CCF has conscientiously defined its purview as it relates to the needs of children and families' mental and physical health, well-being, life skills, and the availability to obtain permanent housing and build strong and stable relationships. The CCF has uniquely defined the community-partnership role by advancing public-private collaboration and advocating for community involvement. Additionally, the CCF connects the concerns of lay people--who experience community and family issues firsthand--to the Board and Departmental staff. The need for that knowledgeable source of consultation, information and targeted recommendations is a continuing one.

In keeping with these historic and ongoing recommendations, the CCF is critically involved in supporting the following activities:

- Securing the Title IV-E Waiver
- Expanding Services for Transition Aged Youth (TAY), including housing, Independent Living Financial Support, Pregnant and Parenting Teen Focus, Mental Health Services, and supporting in-job training and readiness
- Expanding awareness of the need for services for families with young children 0-5 (40% of County detainees), including more mental health professionals and the co-location of mental health workers in Department of Children and Family Services offices with expertise in trauma with young children, services for young children in the visitation processes, and increasing awareness of the challenges faced by children with special needs
- Improving the quality of Mental Health Services for children and families by supporting programs like Parent Child Interactive Therapy (PCIT) and other evidence-based mental health programs
- Advocating for improved visitation services to prepare families for reunification
- Recommending expansion of early childhood education opportunities

- Articulating support for youth in Juvenile Detention via improved nutrition, prevention, development and expansion of crossover projects, better educational opportunities for youth in camps, and support for trauma-informed care through more wraparound services
- Recommending expansion of prevention and service roles of other County departments including the Departments of Mental Health (DMH), Public Health (Nurse-Family Partnership - Substance Abuse), Community and Senior Services, and Health Services (Medical Hubs, Public Health Nurses), Community and Senior Services (Job opportunities), First 5-LA (housing, home visitation, pregnant and parenting teen services)
- Urging departmental leadership accountability through the use of Management Appraisal and Performance Plan (MAPP) goals regarding child welfare, especially TAY Self-Sufficiency
- Promulgating support for child welfare legislative proposals, e.g., protection of Commercially Sexually Exploited Children, Pregnant and Parenting Teens, and access to school records of children and the child welfare system
- Articulating obesity challenges in child welfare , and continuing focus on challenges of domestic violence and substance abuse as precursors to involvement in the child welfare system

In 2006, the CCF was part of a County Committee on Prevention. To date, the CCF continues to highlight the key role that prevention plays in child safety prior to families entering the child welfare system. Current research outlines the long-term effects of trauma and how prevention plays a particularly important role for children ages 0-5.

In October 2013, the CCF presented its recommendations on prevention to the five Board Children's Deputies and the Chief Executive Office at their Children and Families' Well-Being Cluster Meeting and subsequently sent the recommendations to the Board.

In January 2014, the CCF presented its prevention recommendations to the Blue Ribbon Commission on Child Protection (BRCCP), and in April 2014, the BRCCP included the CCF's work on prevention in the BRCCP's 2014 Final Report.

The Board adopted the BRCCP's final recommendations in June 2014, including the recommendation for creation of a new Office of Child Protection (OCP). The Board then put in place the Transition Team of the Office of Child Protection (Transition Team) to monitor the implementation of the BRCCP recommendations during the recruitment process for a Director for the OCP. The CCF was asked to provide a representative on the Transition Team.

The CCF is also a unique bridge to community partners including Kinship (relative caregivers and non-related extended family members), community-based organizations, the courts, the academic community, and private foundations. These partners are a vital part of the child welfare system. The CCF connects with community activities via:

- Collaboration with Public Counsel and the Alliance for Children's rights on the need for equitable funding for kinship foster families
- Collaboration with University of Southern California, University of California Berkeley and DCFS on unmet data needs and better use of available data
- Meeting with kinship and other foster parent agencies regarding respite needs
- Convening public-private agencies to address system barriers involving recruitment of foster parents, DCFS website, IT upgrades, and support for performance-based contracts
- Engaging in processes yielding Family Preservation services and the Prevention and Intervention Demonstration Project (PIDP) with community partners for differential referral systems
- Improving of community and client representation of DMH Strategic Leadership Team for the implementation of the Mental Health Services Act
- Initiation of improved faith-based collaboration for visitation services, using trained coaches to enhance successful reunification

Finally, the CCF advocates for and helps foster team collaboration with other County entities to address child welfare issues in the following areas:

- Support for the BRCCP and the Transition Team, information sharing on several recommendations made by the CCF over many years and input to the BRCCP Final Report
- Representation of CCF through delegated membership on the following bodies:
 - First 5 LA Commission
 - Policy Roundtable for Child Care and Development
 - DMH Strategic Leadership Team (SLT) and SLT Standing Committee
 - DCFS Strategic Plan Workgroups
 - DCFS Family Visitation Workgroups

Commission Activities in 2013-14

Introduction

During Fiscal Year 2013-14, the Commission has focused on five primary areas:

1. Understanding and addressing the needs of the 0-5 population in child welfare
2. Articulating and presenting the need and importance for intra-departmental family prevention services for at-risk families to decrease child detention and keep families safe
3. Supporting and assisting the BRCCP and one of its chief recommendations to establish an Office of Child Protection
4. Collaborating with community and county partners to address foster care recruitment challenges, family visitation needs and breaking the cycle of child welfare by addressing the needs of pregnant and parenting teens in the system
5. Partnering with the following public/private agencies in specific areas of ongoing concern:

Community Partnerships

- Relative caregivers – financial support equity issues; challenges in family visitation
- California Youth Connection – independent living challenges for TAY
- United Friends of Children – independent living challenges for TAY
- Public Counsel – relative caregivers support and need for more transparency in DCFS budgeting process
- Alliance for Children's Rights – independent living challenges for TAY
- Children's Law Center – services for TAY
- Faith-based organizations – successful models of family visitation and retention of Family Preservation linkage
- Community Coalition – family visitation coordination and unmet relative caregivers needs
- Pritzker Foundation, Children's Action Network, Casey Family Programs Foundation – foster care recruitment
- Friends of Families, Shield for Families, Grace Resources Centers – Successful Family Visitation models
- 211 Collaborative – meeting the needs of children with special needs
- Public Private Partnership Collaborative – home visitation issues
- Imagine LA – needs of pregnant and parenting teens exiting the Child Welfare System
- Pew Foundation Collaborative – home visitation

Department of Mental Health

- Strategic Leadership Team (SLT) Ad Hoc (now standing) Committee
- Focus on evidence-based programs for ages 0-5 year old children
- Improving continuity of mental health care over the period of family or child's involvement in child welfare

Department of Children and Family Services

- Continued participation in DCFS Strategic Planning Workgroups including:
 - 1) Prevention/Aftercare
 - 2) Timely Reunification
 - 3) Self-Sufficiency for TAY
 - 4) Increased Relative Placements
 - 5) Technology needs assessment and provision of tools to staff
 - 6) Reduction in Crossover youth
 - 7) Securing IV-E Waiver
 - 8) Reduction of Youth in Care three years or longer
 - 9) Contracting and Oversight of Contracted Services
 - 10) Training Needs Assessment/Redevelopment of Curriculum with Inter-University consortium
 - 11) Coordination and Teaming with Public Health Nurses
 - 12) Family Visitation Centers
 - 13) Regional Office Community Advisory Bodies to Develop Resources, including Resource Centers
 - 14) Outreach and Training for Partners (including contracted and non-contracted Partners)
 - 15) Parents in Partnership Program
 - 16) Children Zero to Five (0-5)
- Continued representation on the State Commission and County Taskforce on Commercially Sexually Exploited Children
- Collaborating with DCFS Strategic Planning Chairs on Family Visitation to look at issues of community partners models, monitoring/coaching challenges, training challenges, implementation of 2006 guidelines, special visitation issues for relatives, and absence of training on visitation for foster parents
- Co-establishment with DCFS of a group consisting of three community agencies operating visitation centers, DCFS staff and four CCF Commissioners to define the challenges facing family and DCFS visitation operations, examine the current capacity for visitation within DCFS offices and the need for more community centers, quantify the data needs and outcomes for current and future systems and recommend effective strategies to increase numbers and quality of this most important family re-unification element

Commercially Sexually Exploited Children Task Force

In 2013, through a Board motion, the Los Angeles County Board created a task force on Commercially Sexually Exploited Children (CSEC). The DCFS was given the lead on convening the task force, which included several County departments. In addition to DCFS, the Probation Department also played a major role in the task force. The CCF who advocated for a task force to address the CSEC issues was invited to participate. The CCF representative participated in the County Task Force, and in addition to attending meetings in Los Angeles, attended meetings in various Cities including Sacramento and Oakland, as part of the statewide effort. As a result of the County and Statewide efforts, some major changes were recommended and initiated, such as the following:

1. A new 72-hour Los Angeles County Protocol

DCFS will implement the new 72-hour protocol, piloted by DCFS, in two regions of the County. The goal is to implement the protocol countywide. When law enforcement identifies youth they suspect are being trafficked or at risk of being trafficked, the following protocol goes into effect:

- a) Alert DCFS;
- b) Connect youth with specialized advocate who stays with the youth for up to 72 hours;
- c) Provide temporary housing;
- d) Conduct a comprehensive medical examination; and
- e) Initiate a Multi-Disciplinary Team (MDT) meeting, which includes the youth to decide on long-term placement. After the 72 hours, the youth will receive a 90-day intensive case management.

2. SB 855, Committee on Budget and Fiscal Review - Human Services

In June 2014, Governor Edmund Gerald Brown, Jr. signed into law a legislative change clarifying the child welfare system's authority to serve CSEC in a non-criminal context. The legislation established a Statewide training program for all involved with CSEC and allocated \$5 million for Fiscal Year 2014-15, and \$14 million thereafter to support the CSEC program.

3. State CSEC Action Team Activities

The State CSEC Action Team is working to support CSEC related projects in various counties. Current objectives include the development of an inter-agency toolkit, training toolkit, and a model services protocol.

The CCF will continue to support and participate on Committees, planning and discussions to provide services for CSEC youth.

First 5 LA

- The CCF worked with First 5 LA staff to identify existing grants that could provide services to children and families in the child welfare system. Some of these grants included programs and services for children ages 0-5, pregnant and parenting teens, housing for pregnant and parenting teens, securing childcare for children in the foster care system, and the Parent Child Interactive Therapy (PCIT) services for these high-risk groups. The CCF encouraged collaboration by working with First 5 LA to convene County departments such as DMH, DCFS, and DPH that play a critical role in the child welfare system. Subsequent collaborative meetings under the leadership of First 5 LA resulted in a Memorandum of Understanding between these key Departments.
- CCF worked with First 5 LA, DCFS and DPH to support provision of substance abuse services to DCFS families through a First 5 LA Grant. CCF participated as part of the Oversight Committee for First 5 LA's evaluation of the program.
- CCF participated on the First 5 LA Strategic Planning Committee to develop a new five-year strategic plan. CCF advocated for increased emphasis on strengthening families and preventing children and families from entering the child welfare system through existing grants and funding of programs like Best Start, Welcome Babies, and Los Angeles Universal Preschool (LAUP).

Probation Department

- The CCF was represented in FY 2013-14 in a multi-agency public/private coalition to design and build a replacement camp for Kilpatrick. The model camp is being built with strong community partnership from the initial design phase to service delivery and re-entry phase. The Los Angeles model centers on youth spending their time with a small group of other youth living in 12 person dorms with a staff ratio of 1/6. Staff goes to school with youth, participates in programs with them and also accompanies them at their meals times. The same staff also spends time with each small group of youth.
- The model includes Los Angeles County Office of Education's Road to Success Academy with a reduced number of youth in the classroom and includes a strong focus on re-entry/aftercare, which starts from the first day youth arrive and involves partnerships, planning, a smooth transition and the follow-up necessary to ensure youth are doing well.

Policy Roundtable for Child Care and Development

- The CCF is represented on the Policy Roundtable for Child Care and Development (Roundtable) by Adelina Sorkin and Ann Franzen (Alternate).
- During the past year, the Roundtable completed the Child Care and Development Policy Framework for 2014-2016: Restore—Integrate—Improve. This Policy Framework is intended to focus County departments and community stakeholders on areas where a unified voice from Los Angeles County can best support the optimum development of our children, families, and communities.

The Roundtable will focus on the following goals in 2014-2016:

1. Restore and Expand Funding
2. Strengthen Policies on Eligibility and Access
3. Maximize Access to Available Services
4. Prioritize Quality Services
5. Expand Family and Community Engagement

In addition, the Roundtable provided input to the First 5 LA Strategic Plan Process. On a regular basis, the Roundtable reviews legislation.

Blue Ribbon Commission on Child Protection (BRCCP)

- The CCF has provided information, data and support to the BRCCP including, but not limited to, prevention strategies for the age 0-5 population, evidence-based programs, and interdepartmental collaborations and community participation. The CCF endorses the BRCCP's recommendations.

Letters Sent

During Fiscal Year 2013-14, the Commission sent letters to the Board of Supervisors (Board) and other officials on the following issues or areas of concern:

Letter Dated July 8, 2013

- Letter to the Board following the appointment of the Blue Ribbon Commission, expressing its willingness to help in preserving the safety and well-being of Los Angeles children.

Letter Dated October 23, 2013

- Letter to the Board, sharing the Commission's focus on Prevention, and seeking central coordination between various departments to keep at-risk children and families from entering the child welfare system.

Letter Dated February 13, 2014

- Letter to the Board urging that adequate funding be designated for children who are victims of sex trafficking, and that it is essential that services for sex trafficking victims be included in the three-year Mental Health Services Act (MHSA) Plan that is being finalized.

Letter Dated May 9, 2014

- Letter to the California State Assembly Appropriations Committee supporting legislation, AB 1902 (Bonita), which would repeal the requirement to assess and collect fees for families with children in part-day preschool in the California State Preschool Program. The bill was supported by the Los Angeles County Board of Supervisors and numerous childcare advocacy agencies.

Letter Dated June 17, 2014

- Letter to Sachi A. Hamai, Executive Officer of the Board of Supervisors, providing notification of the selection of Patricia Curry as its representative for the Transition Team on Child Protection to monitor implementation of the Blue Ribbon Commission on Child Protection's Final Report of April 18, 2014.

Commission for Children and Families Recommendations

The Commission for Children and Families has made the following recommendations:

Wraparound Services

- DCFS and the Courts should increase referrals
- Probation Department should make referrals a MAPP Goal as has DCFS
- DMH should ensure more mental health services are included in wraparound programs

Evidence-based Programs

- DCFS should include as a MAPP goal some percentage increase in PCIT referrals in order to help allay the current underutilization of this valuable program
- DCFS needs to provide more training to CSWs in understanding the differences between well-regarded evidence-based programs such as PCIT, Reflective Parenting, Incredible Years, and Child-Parent Psychotherapy
- DMH needs to better staff EBPs for the 0-5 age group which the above programs serve so well

Family Preservation

- DCFS needs to improve the consistency of referral processes across DCFS offices
- DCFS needs to improve the reporting processes and criteria for ending family preservation services and providing alternative solutions
- DCFS should incentivize the family preservation providers to use of evidence based approaches
- DCFS needs to require a core set of assessment measures and performance indicators in FSP contracts
- DCFS should create a Family Preservation Learning Network

Transitional Age Youth (TAY)

- DMH should design and target emergency shelter, permanent and affordable housing and other service programs for transitional age youth homeless and probation children and ensure sufficient providers to address these youth mental health needs
- DCFS should ensure that every TAY has quality TILP at age 14 and that semi-annual updates are relevant and youth-involved

Prevention

- The CCF recommends that the Board establish prevention services funding in numerous County department budgets including, but not necessarily limited to, DCFS, Probation, Health Services, Mental Health, Public Health, District Attorney, Sheriff, Los Angeles County Office of Education, Libraries, Community and Senior Services and the Chief Executive Officer

Mental Health Services

- DMH should determine how many therapists are needed to adequately serve the Antelope Valley and develop a plan to recruit and train mental health providers in the Antelope Valley
- DMH should develop a program to track and oversee the use of psychotropic medications for probation and foster youth

Blue Ribbon Commission on Child Protection (BRCCP) Initiatives

- The CCF recommends that the Board mandates client satisfaction surveys in every Department
- CCF recommends that the Board supports and implements the BRCCP recommendations

COMMISSION RECOGNITION
May 6, 2014

The Board presented the Commission a scroll in recognition of its 30th Anniversary:

Whereas the Los Angeles County Commission on Children and Families was established in 1984 by the Board of Supervisors as an oversight body charged with reviewing all programs administered by County departments that provide services for children at risk; and

Whereas it collaborates with child welfare and juvenile justice departments, the community, private agencies, faith-based organizations and the court; its leadership in addressing the plight of transition-age children youth achieved an increase in federal funding for youth exiting child welfare and juvenile justice systems, including money for housing, establishing a family-friendly courthouse for dependency cases and providing separate legal representation for children in Court; and

Whereas the Commission has been a leader in helping establish and provide representation on the First 5 LA Commission, the Child Care Roundtable, the Children's Planning Council, and the Education Coordinating Council; and

Whereas it also actively supports innovative and proactive prevention services such as the Prevention Initiative Demonstration Project, the Prevention programs funded under the Mental Health Services Act, Obesity Prevention, Substance Abuse Treatment and efforts to prevent youth from crossing over from DCFS into the Probation Department:

Now therefore, be it resolved that the Board of Supervisors of the County of Los Angeles hereby highly commends the County Commission for Children and Families for 30 years of dedicated service as the Advisory and Oversight body for the Department of Children and Families Services and extends best wishes for continued success under the County's Dependency Care and Supervision.

Don Knabe, Chairman of the Board, Fourth District
Gloria Molina, Supervisor, First District
Mark Ridley-Thomas, Supervisor, Second District
Zev Yaroslavsky, Supervisor, Third District
Michael D. Antonovich, Fifth District

A five-signature scroll was also presented to Commissioner Helen A. Kleinberg, in celebration of her 30 years of continuous service to the Commission.

Commission Committees and Workgroups 2013-14

Standing Committees 2013-14

Childhood Wellness Committee

Adelina Sorkin, LCSW/ACSW, Chair
Ann Franzen
Helen A. Kleinberg

Faith-Based Committee

(Incorporated within Community
Agency Partnership, July 22, 2013)

Dr. Sunny Kang, Chair

Ann Franzen
Adelina Sorkin, LCSW/ACSW
Martha Trevino-Powell

Community Agency Partnership

Patricia Curry, Chair
Becky A. Shevlin
Sydney Kamlager
Dr. Sunny Kang
Martha Trevino Powell

Ad-Hoc Committees

Relative Care Committee

Patricia Curry, Co-Chair
Helen A. Kleinberg, Co-Chair

Crossover Youth Ad-Hoc Committee

Carol O. Biondi, Chair
Patricia Curry
Helen A. Kleinberg

Workgroups

Children's Mental Health Services Act (MHSA) Workgroup

Genevra Berger, Chair
Patricia Curry
Helen A. Kleinberg
Adelina Sorkin, LCSW/ACSW

Transitional Age Youth (TAY) Mental Health Workgroup

Susan F. Friedman, Chair
Patricia Curry
Helen A. Kleinberg
Adelina Sorkin, LCSW/ACSW
Martha Trevino Powell

Family Visitation

Helen A. Kleinberg, Co-Chair
Adelina Sorkin, LCSW/ACSW, Co-Chair
Genevra Berger
Ann Franzen

Commission Representation on County Bodies 2013-14

In addition to the work the Commission performed in their standing committees and workgroups, the Commission also participated in a number of committees and workgroups of other County bodies that cover a wide range of important topics affecting children and families.

Agency Court Cooperation Committee	Adelina Sorkin, LCSW/ACSW
Children's Court Trust Fund Oversight Committee	Adelina Sorkin, LCSW/ACSW
Delinquency Representation Guidelines Committee	Carol O. Biondi
Education Coordinating Council	Helen A. Kleinberg Martha Trevino Powell
Youth Development Services (YDS) Redesign Workgroup	Patricia Curry
Family Reunification Workgroup	Helen A. Kleinberg
Independent Living Program (ILP) Budget Workgroup	Patricia Curry
First 5 LA	Patricia Curry
Mental Health Services Act System Leadership Team (SLT)	Adelina Sorkin, LCSW/ACSW
Policy Roundtable for Child Care and Development	Adelina Sorkin, LCSW/ACSW Ann Franzen
DCFS/Probation Child Sex Trafficking Task Force	Susan F. Friedman
Casey Regional Planning Group on 5 Protective Factors	Patricia Curry
Transition Team for the Office of Child Protection	Patricia Curry
Young Children in Care DCFS	Helen A. Kleinberg
DCFS Strategic Plan Workgroups	
Prevention/Aftercare	Helen A. Kleinberg
Timelier Reunification	Helen A. Kleinberg

Self-Sufficiency for Transitional Age Youth (TAY)	Helen A. Kleinberg Patricia Curry
Increased Relative Placements	Helen A. Kleinberg
Technology needs assessment and provision of tools to staff	Patricia Curry
Reduction in Crossover youth	Patricia Curry Carol O. Biondi
Securing IV-E Waiver	Patricia Curry
Reduction of Youth in Care 36 months or longer	Adelina Sorkin, LCSW/ACSW
Contracting and Oversight of Contracted Services	Genevra Berger
Training Needs Assessment/ Redevelopment of Curriculum with Inter-University Consortium	Genevra Berger
Coordination and Teaming with Public Health Nurses	Genevra Berger
Family Visitation Centers	Sunny Kang
Regional Office Community Advisory Bodies to Develop Resources, including Resource Centers	Sunny Kang Patricia Curry
Outreach and Training for Partners (Including contracted and non-contracted partners)	Sunny Kang Sandra Rudnick Daphne Ng
Parents in Partnership Program	Daphne Ng

Conferences/Events Attended Representing Commission for Children and Families

Systems Improvement Plan (SIP)	Adelina Sorkin, LCSW/ACSW
Casey Forum on Brain Development for Children Age 0-5	Helen A. Kleinberg
Nexus Conference 2013	Helen A. Kleinberg
7th Annual Project Fatherhood Conference	Helen A. Kleinberg
System Improvement Plan (SIP) Annual Stakeholder Engagement Meeting	Adelina Sorkin, LCSW/ACSW
Parent Child Interactive Therapy Demonstrations	Martha Trevino Powell Genevra Berger Ann Franzen
Celebrating '14 Honoring Academic Achievements of Foster Youth	Helen A. Kleinberg

Summary of Issues Discussed at Commission Meetings 2013-2014 and pages of summaries within Link below

DCFS

Wraparound Services, page 1
Evaluation of Family Preservation Services, page 6
Development and monitoring of child welfare contracts: Safe Children, Strong Families RFP, page 13
Sex Trafficking, pages 24 & 25
Dual Certification Requirements for foster and prospective adoptive parents, page 25
Foster Care Recruitment Challenges, page 29
DCFS Child Protection Hotline and differential Response, page 35
DCFS use of Trust Funds, page 35
Family Visitation, page 40

Community Perspectives

Care Inequities between foster children placed with relatives versus those placed with non-relatives, Alliance for Children's Rights, page 8
Child Welfare Funding Perspective: Realignment and Title IV-E Waiver, page 13
Child Welfare Programs provided by Shields for Families, and the need for greater support for Fathers, page 13
Homeless but not Helpless; Faith community engaging with TAY, page 19
Enhanced Transitional Planning (ETP) for TAY (Child Welfare Initiative), page 21
Self-help and Recovery Exchange (SHARE!) Services, page 22
Community Family Visitation Programs, page 40

DCFS/Regional Centers

Developmental Disabilities - Services for youth with Learning and Developmental Disabilities, page 10

DMH

Evidence-Based programs for young children: Reflective Parenting, Parent Child Interactive Therapy, Incredible Years and Child Parent Psychotherapy, page 3

DCFS/DMH

Senate Bill 82 - Youth Placement Mobile Stabilization Teams, page 15

DCFS/Probation

Title IV-E Waiver Expenditures, page 27

Courts

Closure of the Juvenile Dependency Court's Mediation Services and Parents beyond Conflict Program, page 39

Summaries of the Topics of all CFF Meetings can be found at the following link:
[Summaries of the Topics of all CFF Meetings](#)

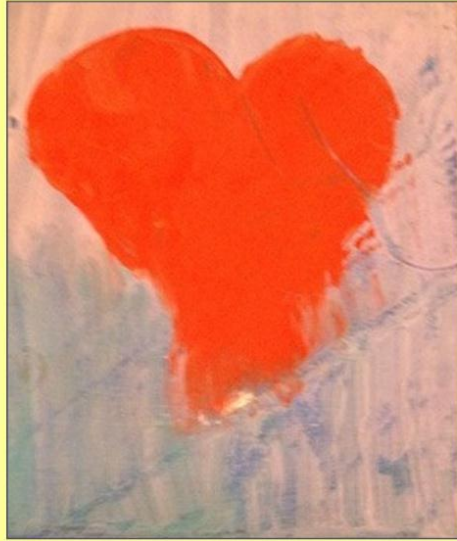
Appendix

- I. Five years prior to the creation of the Blue Ribbon Commission on Child Protection (BRCCP), the following Recommendations were sent to the Board of Supervisors. This compilation of recommendations (shown below) was later shared with the BRCCP.

2007-2012	<u>Commission for Children and Families' Annual Reports (Recommendations to the Board of Supervisors)</u>
2007-2012	<u>Commission for Children and Families Representation on County Bodies</u>
2008-2009	<u>Los Angeles County Commission for Children and Families Annual Report</u>
2008-2013	<u>Commission for Children and Families Letters to the Board</u>
2008–2013	<u>Commission for Children and Families Letters to the Departments</u>

- II. Prevention White Paper and Power Point Presentation – provided to the Board of Supervisors through Children's Cluster

["MAKING PREVENTION A PRIORITY FOR AT-RISK CHILDREN AND FAMILIES IN LOS ANGELES COUNTY" ~ October 16, 2013](#)



Heart
By Jordan, Hillside